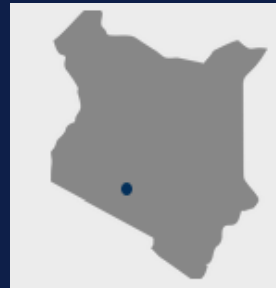
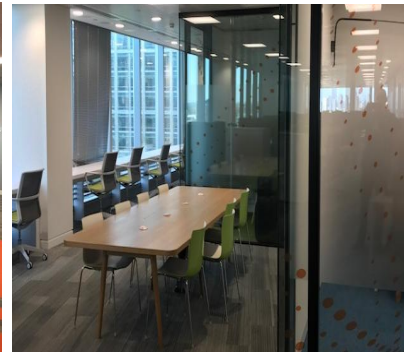


THOMSON REUTERS OFFICE RELOCATION NAIROBI, KENYA

commercial



PROFESSIONAL TEAM

Client
Thomson Reuters

Project Managers
Betts Townsend (Pty) Ltd
Construction Project Managers
Betts Townsend (Pty) Ltd

Electrical Engineers
Loadline Engineers

Quantity Surveyors
Quantimax Consultants
Quantity Surveyors

Interior Architects
Tetris Design Build

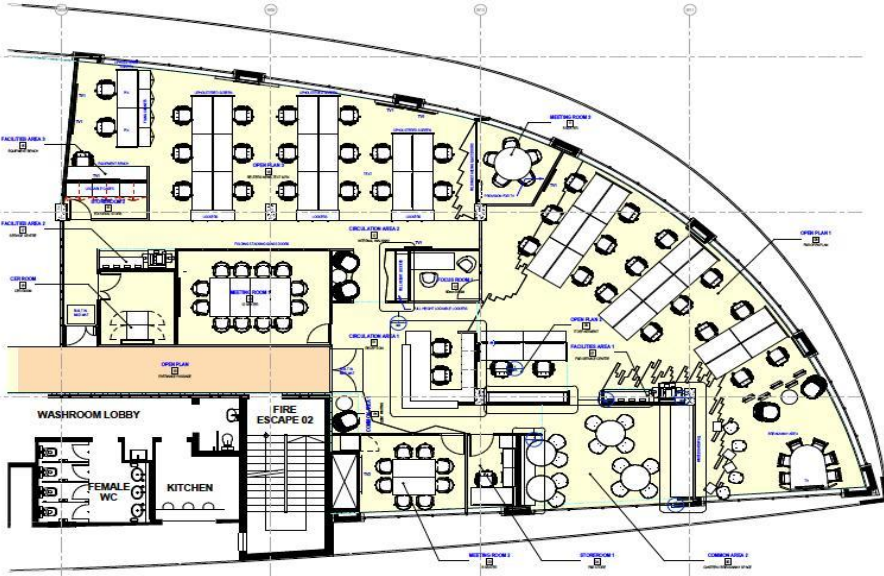
Mechanical Engineers
Loadline Engineers

Betts Townsend was appointed as the Project Managers and Construction Managers for the Proposed Nairobi Thomson Reuters Office Relocation.

This is under a FIDIC EPC form of contract. Betts Townsend was charged with the Design and Build component of the Fit Out. All the contracts in this project were signed and executed by Betts Townsend.

Further to the office in Kenya, Betts Townsend had also been tasked with the fit-out of Thomson Reuters Johannesburg Office.

Betts Townsend is offering a turnkey solution under a GMP framework.



KEY INFORMATION

Value: KES 67,500,000.00

Completion Date: December 2017